

14-A Uniserv Newsletter
452 W. Baldwin
989-356-4551
800-587-5545
Cherring@mea.org

Eastsider

Chuck Herring, UniServ Director
Harriet Poch, UniServ Field Assistant

October 1, 2007

WHERE'S CHUCK?

- Oct. 2 - Alpena ESP I Membership Meeting (MEA office)
- 3 - Travel to Marquette and meeting with Marquette EA re crisis situation
- 4 - Travel back to Alpena
Alpena Board Elections Committee Meeting (MEA office)
- 9 - Atlanta ESP Bargaining (Atlanta)
Association/Building Rep Workshop (MEA office)
- 10 - Atlanta ESP Bargaining (Atlanta)
Region 14 Council – BJ's (Gaylord)
- 11 - Mentoring Meeting (Onaway)
Alpena EA Bargaining
- 12 - MESSA Management/UniServ Meeting (Gaylord)
- 15 - Mentor/Mentee Meeting (Lansing)
- 16-17 - Statewide Staff Meeting (Lansing)
- 18 - NMEA – BJ's (Gaylord)
- 20 - Northern Zone Bargaining Strategy Meeting
- 22 - Alpena EA Bargaining (MEA office)
- 23 - Dinner meeting w/CC Chair re November Agenda (Lewiston)
- 24 - Leave starting at noon
- 25-29 - Chuck on leave
- 30 - **New Member Involvement Get-Together – Brush Creek Mill (Hillman)**
Alpena EA Bargaining –tentative (MEA office)
- Nov. 1 - **Grievance Workshop (MEA office)**
- 6 - Coordinating Council Meeting (MEA office)



What Engler could not do Granholm did.



The Republicans blackmailed the Governor by putting MESSA, teacher retirement, and calendar bargaining between her and a tax increase. Yup, you guessed right, we were the block causing a four-hour shutdown of the state government.

The Republicans have been licking their chops to have MESSA release experience factors, reduce the teacher retirement, and take away our ability to hold the calendar up in bargaining.

The MESSA and retirement bills have been pushed by the Republicans since 1993. The calendar bill is new to me until this fall.

Bottom Line

MESSA bill requires:

- Bidding of health insurance
- Disclosure of claims

Retirement changes:

- Increase contribution rate for new hires from 3.9% to 5.9%
- Graded premiums
- Gradual phase in of actual benefit
- Rate of 4% a year through 30 years to get 90% insurance benefits at retirement.

Common Calendar:

- The ISD's will now set winter and spring breaks

This is probably the most hurtful legislation for educational employees ever enacted. This would include all the dastardly issues included in PA 112 of 1993.

So who did this to us?

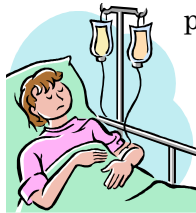
1. Governor Jennifer Ganholm (D) – MEA recommended
2. Lt. Governor John Cherry (D) – MEA recommended
3. Senator Tony Stamus (R) – not recommended
4. Senator Jason Allen (R) – not recommended
5. Rep. Kevin Elsenheimer (R) – not recommended

I will have more on these issues as they surface.

Through all this, Rep. Matt Gillard (D) was with us all the way. Feel free to extend warm fuzzies to Matt.

Did you know...

...uninsured patients are charged more than people with insurance? *Recent Finding:* Hospital



patients without insurance were charged an average of 2.57 times more for similar services than patients with insurance. *Reason for the Gap:* Insurers negotiate discounts. There are nearly 45 million uninsured people in the US. Gerald Anderson, PhD, director, Center for Hospital Finance and management, Johns Hopkins Bloomberg School of Public health, Baltimore, and leader of a study of hospital data over 20 years, published in *Health Affairs*.

...nature is responding to global warming? Today, lilacs, apples and grapes start blooming



several days earlier than they did in the 1960s...the mating-call dates of frogs are 13 days earlier than they were a century ago...and invasive weeds, insects and plant diseases that plague farmers may be finding it easier to take hold. David Wolfe, PhD, professor of horticulture, Cornell University, Ithaca, New York. www.climateandfarming.org.

HAVE YOU CHECKED OUT THE NORTHERN ZONE WEBSITE YET –
www.northernzonemea.org

